

— Indiana —
HEREFORD

Spring 2017

**N
E
W
S**

In this issue...

ANNUAL MEETING HIGHLIGHTS
HOOSIER BEEF CONGRESS
JUNIOR NEWS



CHANGE SERVICE REQUESTED

PRSRJ STD
U.S. Postage
PAID
MANHATTAN,
KS
Permit No. 580

Indiana Hereford Association
3041 East 300 North
Wingate, IN 47994

*Calves out of these great females
and more available this spring*



**Embryos
available
out of Mona
and Chevelle!**

EF MONA CHEVELLE 907 3907
2014 JNHE Reserve National
Champion Hereford Heifer



**Fertility
Tested Bulls
For Sale**

EF MONA 607 907
Mother of Chevelle

**EVERHART
HEREFORDS**

EVERHARTHEREFORDS.COM

- WALDRON, IN -
BRUCE AND SHOSHANNA 317-407-3618
BLAKE AND ASHLEY 317-409-1923
BRIAN AND JORDAN 317-512-0375

Follow Us
on Facebook





StockVets LLC
LIVESTOCK VETERINARY ASSOCIATES, PC

**"YOUR PARTNER in
creating TOMORROW'S
GENETICS TODAY!"**

[CATTLE REPRODUCTIVE SERVICES]

In Vitro Fertilization (IVF)

- Reverse Sorted Semen
- Oocyte Collection
- Direct Transfer of Frozen IVF Embryo
- On Farm Fresh Embryo Transfers

Conventional Flushing & Embryo Transfer (ET)

- In House & On Farm

Donor Management

- Housing & Care
- Creep Feed

Assistance in Synchronization for Donor and Recips

StockVets LLC
LIVESTOCK VETERINARY ASSOCIATES, PC

5280 W 100 S - Rensselaer, Indiana 47978 Hours: M-F 8am-5pm, Sat 8-noon Clinic Phone Number: [219-866-3636](tel:219-866-3636)



Beckman Family: Res. Spring Calf Champion @ Denver



Skiles Family: Spring Calf Champion @ NAILE & Denver



Walker Family: Many-time Champion.
Reserve Intermediate @ Denver

Congratulations to our customers on a great Denver! These division winners (and more!) helped us to be honored as premier breeder and exhibitor both in Denver and Louisville. All of the champions (pictured above and below) were purchased in previous online sales. Please join us **Sunday, March 26th** at breedersworld.com. We will offer the top end of our late-summer and fall calf crop, as well as our largest-ever offering of frozen genetics. Sibs and progeny of the champions pictured here will be offered.



www.purplereigncattle.com

RANDY & JAMIE MULLINIX 309-995-3013 • 309-853-6565 • 309-853-7674
997 Twp Rd 150 East, Toulon, IL 61483 • purpleign76@gmail.com

MINUTE WITH MEENTS

HEREFORD ADVANTAGE

The American Hereford Association has recently come out with a new advertising brochure named Hereford Advantage. I believe it is one of the best pieces of material the AHA has released in many years.

Hereford Advantage speaks about how Accountable, Predictable, Profitable, and Sustainable Hereford cattle are. It explains the value of heterosis saying that the cheapest and most profitable technology available to cattle producers is heterosis. Research projects at Circle A Ranch and Harris Ranch both documented that calves sired by Hereford bulls have a \$30 per head advantage in feedlot profitability, and females have the maternal advantage of 7% higher pregnancy rate when comparing the Hereford-sired females to Angus-sired females. Data for Circle A also prove a net income of \$51 more per cow per year, and significantly higher selling price for bred heifers.

There is a reason a true black baldie is the most favored cow in America. The reason is the value of Hereford heterosis which adds fertility, size, growth, feed efficiency, carcass premiums, docility, soundness, adaptability, improved herd health, and heavier calves at weaning.

Hereford breeders across Indiana and all states have improved their Hereford genetics greatly in the past decade. Here is some data to prove it. Since 2004, Hereford cattle have a 14% reduction in birth weights, a 20% increase in weaning and yearling weights, and a 30% increase in end product merit. That all equals increase efficiency and profitability.

"Hereford Does It All" is the new slogan used by AHA currently. Herefords reduce input costs along with having excellent feed conversion. Herefords offer hardiness, fertility, longevity, and a gentle disposition. They have optimum muscle, optimum milk, adaptability, soundness will increase hybrid vigor.

Please let me know if you would like a few of these promotional pieces to share in your local area. Help your neighbors be more profitable by selling them a Hereford bull.

— *Make your cattle better today, because you have to market them tomorrow!*



John Meents, AHA Field Staff
Cell: 419 306 7480
jmeents@hereford.org

INDIANA HEREFORD NEWS

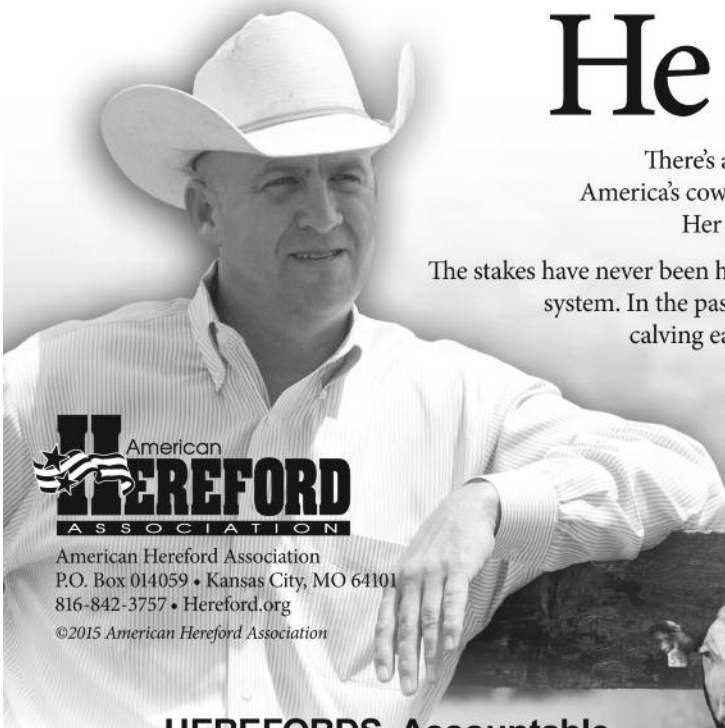
Published twice a year in February and September and mailed to Hereford breeders in Indiana.

Black/White Ad Rates:
1 page...\$150
1/2 page...\$100
1/4 page...\$60
Business Card...\$35

Three 4-color page ads are available on a first-come, first serve basis for \$250.

To place an ad, contact:
Jane Adolph, Mt. Carroll, Ill.
815-244-5456 | E-mail:
jeadolph@gmail.com

Jill Duncan, Wingate, Ind.
765-366-0295 | E-mail:
indianaherefords@gmail.com



He wants it all.

There's a reason a tried and true black baldie is the most favored cow in America's cow herd. She's accountable, predictable, profitable and sustainable. Her calf and her steer mates are in demand, regardless of end point.

The stakes have never been higher to create **value** and **efficiency** throughout the production system. In the past decade, Hereford has documented dramatic improvements in calving ease, weaning and yearling performance and end product merit.*

Reduce your risk. Improve your opportunity for profitability.

You want it all
in your beef operation?
Then take it.



**HEREFORDS. Accountable.
Predictable. Profitable. Sustainable.**

* The Spring 2015 Hereford Pan-American Cattle Evaluation (PACE) documents consistent improvements in all traits of economic importance. From 2004 to 2014, AHA Genetic Trends indicate a 14% reduction in birth weights, 20% improvement in weaning and yearling performance and a 30% improvement in end product merit. Hereford.org/userfiles/S15_Trend.pdf

ANNUAL MEETING



2017 IHA Board

Thatcher Landrum, director; Gordon Clinkenbeard, director; Scott Lawrence, director; Dave Dixon, director; Bryan Kelly, V.P.; Rick Davis, President; Kristie McFtridge, director; Jill Duncan, Sec/Treas; Tony Schantz, director; Terry Hayhurst, director; Bob Greives, director; Bruce Everhart, director; Ted Hunt, retiring director
 Not pictured: Dan Harker, Doug Musser, David Duncan, Bill Doig and John Camden

A HUGE thank you to Bruce Everhart for all his hard work over the past several years serving as President and Ted Hunt as a director!



Indiana Junior Hereford Association Members

Over 40 members of the Indiana Junior Hereford Association attended the Annual Meeting in January. 2017 officers include: Samuel Lawrence, President; Dalton Davis, Vice President; Megan Marion, Secretary; Hattie Duncan, Treasurer; Kylie McFtridge, Reporter; Sarah Lawrence, Hayley Musser, Dylan Kottkamp and Burk VanHorn, Directors; Jayden Simpson and Michaela Marion, Junior Directors.

The 2017 IJHA Preview show will be held June 23-25 at the Boone County Fairgrounds.



2016 IHA Family of the Year
 Rick, Lynn and Dalton Davis



2016 IHA Hall of Fame
 Gordon and Janet Clinkenbeard



2016 Show Bull
 Dalton Davis, Owner



2016 Show Heifer
 Libby Dixon and Family, Owners



2016 Show Steer
 Hattie and Ray Duncan, Owners



This is a



Since you read it anyway, you may as well continue for the REAL NEWS...

Do you need a bull from out of state or can you live with an Indiana-bred bull?

*Come to Battle Ground to check out a couple of 2-year-old meat wagons. Both used here last summer (i.e. "experienced"). Broke to lead, domesticated, good disposition (act like bulls). Priced below the AHA reported bull average from last year. For some reason, several people have told me that it's difficult to raise cattle when you shoot the bull. That being said, you'll need to turn elsewhere for your **FAKE NEWS**.*

HB AA Thorton 5316

P43607971 — Calved: 1-27-2015

THR THOR 4029

AA THORTON 370

AA LF RELOAD LADY 706

AA DESTINY 9127

AA DESTINEE 333

AA HRD ARLENE 17

BW 4.2 | WW 60 | YW 96 | Milk 19 | M&G 50

AA HRD BISHOP 589

P43576319 — Calved: 3-26-2015

H KH DD EXCEL 0091 ET

AA HRD THE ANSWER 2126

AA HRD MS AIRWAVE 7138

CRR HELTON 980

AA HRD KIMBERLY 155

AA HRD LADY ONLINE 7114 ET

BW 2.2 | WW 54 | YW 84 | Milk 23 | M&G 50

The following heifers are available. We will begin breeding the older ones in late March. These show heifer prospects can still make the May 15th deadline for Indiana 4H Enrollment. Lots of age classes, all broke to lead with prices for every budget!

| ID | Birthdate | Reg. # | Sire | MGS |
|------|-----------|----------|--------------------|----------------------|
| 5041 | 9-6-2015 | 43659905 | Gen-Lor Rock Solid | Star You've Got Mail |
| 6852 | 1-26-2016 | 43697428 | LaGrand Reload | KCF Bennett 3008 |
| 6055 | 2-9-2016 | | SHF All Star 42X | H KH DD Excel 0091 |
| 6056 | 2-15-2016 | 43723274 | TFF HB Money Man | C Sensation 028X |
| 6058 | 2-25-16 | 43697455 | CHAC Mason | MSU Bennett Rev. 4R |
| 6064 | 3-24-16 | 43723849 | CHAC Mason | Boyd NJW Standout |
| 6067 | 3-26-2016 | 43724322 | KCF Bennett Encore | H KH DD Excel 0091 |
| 6073 | 4-8-2016 | 43723348 | HB/AA Loaded 4830 | AA Rd LF Airline |
| 6374 | 5-4-2016 | 43697426 | AA Thorton 370 | KT Top Secret 1030 |
| 6084 | 10-6-2016 | 43769905 | SHF Ultra Max | LaGrand Reload |

HUNT BROS.

— Herefords —

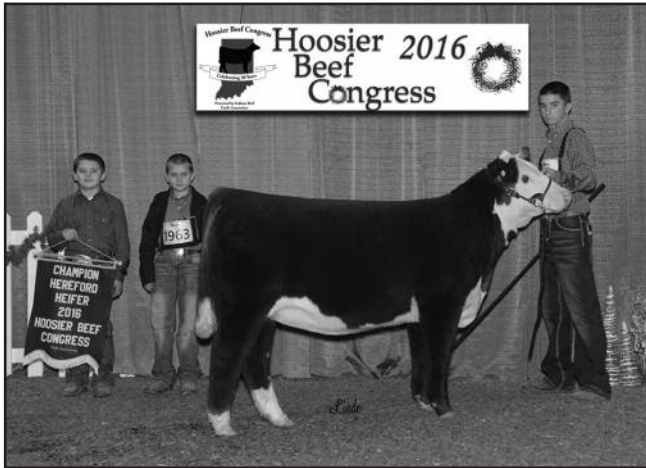
7940 N. 500 E. • Battle Ground, IN

H: 765-567-2409 • C: 765-418-0651 • huntbrosherefords.com

SHOW RESULTS

2016 HOOSIER BEEF CONGRESS

DECEMBER 3-4, 2016 | INDIANAPOLIS, INDIANA



Champion Heifer
Exhibited by Luke Harker



Champion Steer
Exhibited by Chase Harker



Reserve Champion Heifer
Exhibited by Dalton Davis



Reserve Champion Steer
Exhibited by Alyvea Bender

Heifer Show Results:

(75 heifers were exhibited)

- Division 1 Champion: Luke Harker
- Division 1 Res. Champion: Hadley Hendrickson
- Division 2 Champion: Dalton Davis
- Division 2 Res. Champion: Trent Johnson
- Division 3 Champion: Payton Farmer
- Division 3 Res. Champion: Hadley Hendrickson
- Division 4 Champion: Luke Dixon
- Division 4 Res. Champion: Collin Deatsman
- Grand Champion: Luke Harker
- Reserve Grand Champion: Dalton Davis

Steer Show Results:

(38 steers were exhibited)

- Champion: Chase Harker
- Reserve Champion: Alyvea Bender

Showmanship Results:

- Collin Deatsman, Champion Novice Showman
- Hadley Hendrickson, 3rd place Novice Showman
- Dylan Kottkamp, 3rd place Intermediate Showman

LOOKIN' BACK

BY: MARILYN ROBERTS

Several years ago while the Hereford board was planning a new directory, active debate ensued as to whether pages listing all officers from the past should be eliminated. Art Timberlake pointed out "It's our history." I sided with Art because I think history of any business, family or organization is very important.

My grandpa often said, "You can't know where your goin' if you don't know where you've been." So as space permits, looking back at where Indiana Hereford history "has been" will appear in this new publication.

In the grand scheme of the past, the current Indiana Hereford Association is a baby. Actually the Juniors led the way in merging the Indiana Horned and Polled Associations. At the 1994 state fair, a group of kids from both aisles had the idea of combining their preview shows.

A young lady that is now my daughter in-law led the charge. It was not an easy task but the youngsters demonstrated a lot of maturity. They finally prevailed in convincing the adults it was a good idea. The first combined Jr. Preview Show was in June 1995 at the Boone County fairgrounds.

The Juniors' success and leadership spurred the IHHA and IPHA into action. Members from both associations began exploring the possibilities of merging. Several meetings were held for hammering out bylaws, working on changes to the website, and combining boards of directors.

In January 2000, a very large group of breeders came together in Shelbyville, Ind. to approve the new name and bylaws. New officers, junior advisors, and committee heads were elected. A new era of Indiana Hereford history began.

New friendships have been made. New partnerships have been formed. The quality of Hereford cattle has improved way beyond expectations.

Many of you reading this article were a part of the merger and probably have your own memories of how it went. But most of the 40 plus juniors that recently met for their annual meeting were not even born in 2000.

So this "look back" is for them. From the enthusiasm I saw on January 28th, they know where they are going.

If you want to contribute to a future article on Gold Meal shows, send your recollections to mjgroberts@yahoo.com.

JUNIOR NEWS

2017 JUNIOR NATIONAL HEREFORD EXPO
JULY 15-21 • LOUISVILLE, KENTUCKY

During the IJHA Annual Meeting, President Samuel Lawrence challenged each junior member to get involved in all the events at the 2017 Junior National Hereford Expo in Louisville. He encouraged everyone to participate in one other contest besides livestock judging and showmanship.



Upcoming deadlines are as follows:
Scholarship and Prospect Awards: April 1
Photography Contest: June 1
Grill Off Contest: June 15
Speech Contest: June 15

If you are interested in participating in any event, please contact advisors Kristie or Jill. Also, JNHE committee members have asked for volunteers to assist throughout the week. If you would like to help in any way, please let us know.

Indiana Junior Hereford Association's
2017 Preview Show
— June 23-25 —
Boone County Fairgrounds

Open Show & Showmanship

Saturday, June 24 – Judge: Andrew Foster

Junior Steer & Heifer Show

Sunday, June 25 – Judge: Todd Herman

Hotel Accommodations

Room Blocks under Indiana Junior Herefords

Holiday Inn 765-483-4100 • Comfort Inn 765-482-4800

Camping hookups also available at the fairgrounds, \$25 per night

MEMBER NEWS

CHELSIE MARIE HILL

Chelsie Marie Hill, age 8, of Wakarusa, a precious daughter, sister, granddaughter, cousin, friend and schoolmate, went to be with Jesus at 5:34 PM, Tuesday, December 27, 2016 at her residence as a result of an accident. She was born May 9, 2008 in South Bend to Josh and Abby (Siri) Hill.

We celebrate her life as a brave, adventurous, smart, sweet girl. She loved her family deeply. She was very close with her dear mom and would take girl explorations as a reprieve from all the boys at home. At age six her dad prayed with her to ask Jesus into her heart. Her love for Jesus was evident by the joy she expressed. Her thoughtfulness, creativity and love was shown through making cards and beautiful artwork for her family and others. Chelsie loved to learn and had the same love to teach. There are many memories of her in her schoolroom at home showing her brothers how to read and write. She also taught them to roller-skate, play basketball, and whistle among many other things. She was gentle and nurturing to her sweet brothers. Chelsie also enjoyed playing with all her cousins: the many adventures they shared will always be remembered.

Chelsie was a proud Panther at Madison Elementary where she befriended everyone and was loved by all. She participated in basketball after school and was excited to prepare for the spell bowl. She loved singing and enjoyed performing in the school programs. She was proudly awarded the Wisler Award – the most prestigious award at Madison. We will remember Chelsie for her gorgeous smile, her joyful demeanor, wearing dresses and cowboy boots, loving the color turquoise and pink, painting fingernails, and exploring the outdoors, but most of all we will remember her for bringing love and life to our family and her immense love for Jesus.

Surviving are her parents, Josh and Abby Hill; brothers, Connor Lee, Colby Lee, Croy Lee Hill, all at home; grandparents, Terry and Kim Hill, Mishawaka, Rick and Colleen Siri, Mishawaka; great grandmothers, Helen Hill, Goshen, Arlene Mroczek, Mishawaka; Aunts; Uncles; and Cousins, who she especially enjoyed playing with.



CLETUS DEVON DAVIS

Cletus Devon Davis, 85, of Thorntown, passed away October 5, 2016, at Homewood Health Campus in Lebanon.

Cletus was born on March 24, 1931, in Boone County, the son of the now late Jess and Merle (McCurdy) Davis. He married Betty Crum on June 3, 1949. She survives.

Cletus graduated from Thorntown High School. He owned his own business as a carpenter and he built many of the homes in Boone County. Cletus took pride in his farming and in his livestock. He was a breeder of Hereford cattle, which earned him many high awards throughout the nation, including the Boone County Breeder's and Feeder's Distinguished Agriculture Career award. Cletus was involved in the Boone County 4-H organization. He was a Purdue sports fan and he particularly enjoyed basketball. Cletus was also a little league baseball coach in Thorntown. He was a member of the John Purdue Club for many years.

Survivors include his wife Betty Davis, his children Rick (Lynn) Davis and Jill Davis both of Thorntown, and his grandchildren Garrett Kelly of Thorntown, Landon Kelly of Maine, and Dalton Davis of Thorntown. In addition to his parents, Cletus was preceded in death by his siblings Bob, Lawrence, Cecil, Basil, Ammon, and William Davis, Genevieve (Jenny) Thacker, and Gerald Dean Lewis.

RECIPE CORNER

— Crazy Quesadillas —

Cooking Time: 25 to 30 minutes

Servings: 4

Ingredients

- 1 pound Ground Beef (90% to 95% lean)
- 1 jar (16 ounces) prepared salsa with black beans and corn
- 1-1/2 cups shredded spicy Mexican cheese blend or shredded Cheddar-Jack cheese with jalapeño peppers
- 1/4 cup chopped fresh cilantro
- 4 large flour tortillas (10-inch diameter)
- Chopped fresh cilantro

Instructions

- Heat oven to 350°F. Heat large nonstick skillet over medium heat until hot. Add Ground Beef; cook 8 to 10 minutes, breaking into 3/4-inch crumbles and stirring occasionally. Pour off drippings.
- Reserve 1/2 cup salsa. Add remaining salsa, cheese and 1/4 cup cilantro to beef; mix well. Spoon 1/4 of beef mixture onto half of each tortilla. Fold tortillas in half to close. Place on baking sheet.
- Bake in 350°F oven 10 to 11 minutes or until filling is heated through and edges of tortillas are lightly browned and crisp.
- Sprinkle with cilantro, as desired; serve with reserved salsa

Nutritional Information:

601 calories; 23 g fat (12 g saturated fat; 5 g monounsaturated fat); 11 mg cholesterol; 111 mg sodium; 53 g carbohydrate; 4.2 g fiber; 41 g protein; 8.8 mg niacin; 0.4 mg vitamin B 6 ; 2.3 mcg vitamin B 12 ; 5.2 mg iron; 33.9 mcg selenium; 7.4 mg zinc. This recipe is an excellent source of protein, niacin, vitamin B 6 , vitamin B 12 , iron, selenium and zinc; and a good source of fiber.

Clinkenbeard Farms *and Sons*

Sale with Club Steers, Heifer & A.I. Sires



Cattle Available Now!

14099 East County Line Road | Edwardsport, IN 47528
Cell: 812-881-8988 | E-mail: gjclink@hotmail.com

Club Steer & Heifers
A.I. Sires: Sonora, Reload, Wideload,
Devo, Embrace AE, Long Drive

Understanding Hereford EPDs

The American Hereford Association (AHA) currently produces expected progeny differences (EPDs) for 15 traits and calculates four profit (\$) indexes. Research is ongoing to develop traits for fertility, feed intake and docility.

Today, DNA-marker tests can be used to enhance the accuracy of Hereford EPDs. AHA blends marker information with phenotypic information and pedigree to produce a GE-EPD. Look for the GE-EPD logo denoting an animal has been tested.

The current suite of Hereford EPDs and \$ indexes includes:

Calving Ease – Direct (CE)

CE EPD is based on calving ease scores and birth weights and is measured on a percentage. CE EPD indicates the influence of the sire on calving ease in females calving at 2 years of age. For example, if sire A has a CE EPD of 6 and sire B has a CE EPD of -2, then you would expect on average if comparably mated, sire A's calves would be born with an 8% more likely chance of being unassisted when compared to sire B's calves.

Birth Weight (BW)

BW EPD is an indicator trait for calving ease and is measured in pounds. For example, if sire A has a BW EPD of 3.6 and sire B has a BW EPD of 0.6, then you would expect on average if comparably mated, sire A's calves would come 3 lb. heavier at birth when compared to sire B's calves. Larger BW EPDs usually, but not always, indicate more calving difficulty. The figure in parentheses found after each EPD is an accuracy value or reliability of the EPD.

Weaning Weight (WW)

WW EPD is an estimate of pre-weaning growth that is measured in pounds. For example, if sire A has a WW EPD of 60 and sire B has a WW EPD of 40, then you would expect on average if comparably mated, sire A's calves would weigh 20 lb. heavier at weaning when compared to sire B's calves.

Yearling Weight (YW)

YW EPD is an estimate of post-weaning growth that is measured in pounds. For example, if sire A has a YW EPD of 100 and sire B has a YW EPD of 70, then you would expect on average if comparably mated, sire A's calves would weigh 30 lb. heavier at a year of age when compared to sire B's calves.

Maternal Milk (MM)

The milking ability of a sire's daughters is expressed in pounds of calf weaned. It predicts the difference in average weaning weights of sires' daughters' progeny due to milking ability. Daughters of the sire with a +14 MM EPD should produce progeny with 205-day weights averaging 24 lb. more (as a result of greater milk production) than daughters of a bull with a MM EPD of -10 lb. (14 minus -10.0 = 24 lb.). This difference in weaning weight is due to total milk production during the entire lactation.

Maternal Milk & Growth (M&G)

Maternal Milk & Growth reflects what the sire is expected to transmit to his daughters for a combination of growth genetics through weaning and genetics for milking ability. It is an estimate of daughters' progeny weaning weight. A bull with a 29 lb. M&G EPD should sire daughters with progeny weaning weights averaging 19 lb. heavier than progeny of a bull's daughters with a M&G EPD of 10 lb. (29 minus 10 = 19 lb.). It is equal to one-half the sire's weaning weight EPD, plus all of his MM EPD. No accuracy is associated with this since it is simply a mathematical combination of two other EPDs. It is sometimes referred to as "total maternal" or "combined maternal."

Maternal Calving Ease (MCE)

MCE EPD predicts how easily a sire's daughters will calve at 2 years of age and is measured on a percentage. For example, if sire A has a MCE EPD of 7 and sire B has a CE EPD of -3, then you would expect on average if comparably mated, sire A's daughters would calve with a 10% more likely chance of being unassisted when compared to sire B's daughters.

Mature Cow Weight (MCW)

The MCW EPD was designed to help breeders select sires that will either increase or decrease mature size of cows in the herd.

The trait was developed after years of cow weight data collection and the EPD relates directly to the maintenance requirements of a cow herd. For example, if sire A has a MCW EPD of 100 and sire B has an EPD of 85, then you would expect the females of sire A, if mated to similar cows, to be 15 lb. heavier at mature size.

Udder suspension (UDDR)

UDDR EPDs are reported on a 9 (very tight) to 1 (very pendulous) scoring scale. Differences in sire EPDs predict the difference expected in the sires' daughters' udder characteristics when managed in the same environment.

For example, if sire A has a UDDR EPD of 0.4, and sire B has a UDDR EPD of -0.1, the difference in the values is 0.5, or one-half of a score. If daughters of sires A and B are raised and managed in the same environment, you would expect half a score better udder suspension in daughters of sire A, compared to sire B.

Teat size (TEAT)

TEAT EPDs are reported on a 9 (very small) to 1 (very large, balloon shaped) scoring scale. Differences in sire EPDs predict the difference expected in the sires' daughters' udder characteristics when managed in the same environment.

For example, if sire A has a teat size EPD of 0.4, and sire B has a teat size EPD of -0.1, the difference in the values is 0.5, or one-half of a score. If daughters of sires A and B are raised and managed in the same environment, you would expect half a score smaller teat size in daughters of sire A, compared to sire B.

Scrotal Circumference (SC)

Measured in centimeters and adjusted to 365 days of age, SC EPD is the best estimate of fertility. It is related to the bull's own semen quantity and quality, and is also associated with age at puberty of sons and daughters. Larger SC EPDs suggest younger age at puberty. Yearling sons of a sire with a .7 SC EPD should have yearling scrotal circumference measurements that average 0.7 centimeters (cm) larger than progeny by a bull with an EPD of 0.0 cm.

Carcass Weight (CW)

Carcass weight is a beneficial trait when considering the impact that pounds have relative to end product value. At the same age constant endpoint, sires with higher values for carcass weight will add more pounds of hot carcass weight compared to sires with lower values for carcass weight. For example, if sire A has a CW EPD of 84 and sire B has a CW EPD 64, then you would expect the progeny of sire A, if harvested at the same age constant endpoint, to have a 20-lb. advantage in terms of hot carcass weight.

Rib Fat (FAT)

The FAT EPD reflects differences in adjusted 365-day, 12th-rib fat thickness based on carcass measurements of harvested cattle. Sires with low, or negative FAT EPDs are expected to produce leaner progeny than sires with higher EPDs. Ultrasound measures are also incorporated into this trait and have been shown to be highly correlated with the performance of slaughter progeny. All data is expressed on a carcass scale.

Ribeye Area (REA)

REA EPDs reflect differences in an adjusted 365-day ribeye area measurement based on carcass measurements of harvested cattle. Sires with relatively higher REA EPDs are expected to produce better-muscled and higher percentage yielding slaughter progeny than will sires with lower REA EPDs. Ultrasound measurements are also incorporated into this trait and have been shown to be highly correlated with the performance of slaughter progeny. All data is expressed on a carcass scale.

Marbling (MARB)

MARB EPDs reflect differences in an adjusted 365-day marbling score (intramuscular fat, [IMF]) based on carcass measurements of harvested cattle. Breeding cattle with higher MARB EPDs should produce slaughter progeny with a higher degree of IMF and therefore higher quality grades. Ultrasound measurements are also incorporated into this trait and have been shown to be highly correlated with the performance of slaughter progeny. All data is expressed on a carcass scale.

Baldie Maternal Index (BMSI)

BMSI is a maternally focused index that has a production system based on 1,000-Hereford x Angus females with a progeny harvest endpoint directed toward Certified Hereford Beef (CHB).

This index is more critical of CE than the Brahman Influence Index (BIIS) and also has significant weight on fertility. There is positive weight on WW and a slightly negative weight on YW, which promotes early growth and then a slow down on growth to keep mature size manageable. The emphasis of IMF is greater than the emphasis of REA. This is true because of the price difference of the Choice-Select spread and the fact that there is very little incentive to produce cattle better than a Yield Grade 3. This index is geared to service any commercial program that has British-cross cows.

Calving Ease Index (CE\$)

This is a general purpose index that focuses on identifying bulls that can be used on heifers and then ultimately the calves will be marketed through the CHB program. As you might expect, CE and MCE carry significant weight in this index along with fertility. There is very little weight put on growth traits and less emphasis on carcass. Remember, this is a general index that is specifically designed to be used in a heifer program.

Brahman Influence Index (BIIS)

BIIS is a maternally focused index that is based on a 1,000-head cow herd of Brahman x Hereford cows. The progeny for this index will be harvested in a commodity-based system since CHB does not accept Brahman-influenced cattle into the program. This index has less emphasis for CE than any of the other indexes. There is emphasis on both REA and IMF since the cattle will be harvested through a commodity market. The largest emphasis is in fertility, which is measured solely by SC at the present time. Obviously, the target for this index is the producers in the Southern regions of the U.S. where the bulls are typically sold to commercial cattlemen that have Brahman-influenced cow herds.

Certified Hereford Beef Index (CHBS)

This is a terminal sire index that is built on a production system where Hereford bulls sire calves for the CHB market. There is some pressure put on CE and then positive weight on both WW and YW. Remember that all offspring in this index are harvested, so they need to be born alive and then grow fast at all stages of life. Of course, we have much more emphasis on fat in this index, as we want the cattle to stay lean. There is also a significant weight on both REA and IMF with more emphasis again on IMF. This index would be used by producers who have a target of producing bulls for a terminal breeding program. It could be used heavily in the Midwest where bulls are used in rotational breeding programs to produce cattle in a retained ownership program or are simply sold to backgrounders. This is the only index that has no emphasis on fertility. Remember that nothing is retained in the herd.

Take a Look...

**Here's a sample of what's available
this spring at the farm private treaty!**



6118

#43729901 • Calved: 5/14/2016
SIRE: CHEZ AA NEXT LEVEL ET
MGS: STAR AIRWAVE 237C



692

43725507 • Calved: 3/24/2016
SIRE: CHEZ AA NEXT LEVEL ET
MGS: KT TOP SECRET 1030



AA HRD IRENE 6112

#43729899 • Calved: 5/5/2016
SIRE: GRASSY RUN IRISH RED 4032
MGS: PR 144U BAILOUT 0005 ET



AA HRD NIA 6136

#43729922 • Calved: 7/3/2016
SIRE: CHEZ AA NEXT LEVEL ET
MGS: PR 144U BAILOUT 0005 ET

ABLE ACRES

Check our website videos: www.ableacres.com



L.R. Duncan and Family
1264 N. Mountain Rd. • Wingate, IN 47994
David Duncan, cell: 765-366-0295
Lawrence Duncan, cell: 765-918-2297
pduncan@tctc.com • www.ableacres.com



Carper Family Herefords

Thomas, Cassie and Braxton Carper
7710 North State Road 56 • Vevay, IN 47043
Thomas: (540) 336-2737 • Cassie: (812) 584-4008
thomascarperauctions@yahoo.com

Focused On A Vision



GG AA Hot Ticket 531C ET

[DLF,HYF,IEF]

P43713593 – Calved: Dec. 19, 2015 – Tattoo: BE 531C

SCHU-LAR ON TARGET 225
KCF BENNETT ENCORE Z311 ET
P43387256 KCF MISS REVOLUTION X338 ET

SCHU-LAR 5N OF 9L 3008
SCHU-LAR 208 OF 1H 121 ET
MSU TCF REVOLUTION 4R
JW 718 VICTORIA 9106

RST TIMES A WASTIN 0124
GG MISS TIME 0124
P43487492 GG MISS REVOLUTION 204Z

CRR ABOUT TIME 743
RST MS 1000 BLAZER 2029
MSU TCF REVOLUTION 4R
GG MISS 7167 011X ET

GG Miss Time 0124 405B [DLF,HYF,IEF]

Dam – Denver 2015

| CE | BW | WW | YW | MM | MG | MCE | MCW | UDDR | TEAT | SC | CW | FAT | REA | MARB | BMI\$ | CE\$S | BII\$ | CH\$S |
|-----|-----|----|-----|----|----|-----|-----|------|------|-----|----|-------|------|------|-------|-------|-------|-------|
| 3.2 | 2.7 | 70 | 112 | 25 | 59 | 1.3 | 114 | 1.34 | 1.34 | 1.3 | 79 | 0.002 | 0.55 | 0.31 | 25 | 17 | 20 | 40 |

Heifer Calf Matings This Year...

Full Throttle x 405B | Aventus x 405B | Encore x 405B
Small Town Kid x 204Z | NJW McEwen x 204Z | Times A Wastin' x 204Z

A select group of bulls for sale with GE-EPDs sired by Encore, NJW Trust 167Y, McEwen and About Time!

GREIVES HEREFORDS

Bob Greives | 7591 N. Armstrong Chapel Rd., W. Lafayette, IN 47906 | 765.583.3090, Cell: 765.491.6277

Gary Duncan: 765.366.6000 | E-mail: greivesgranite@yahoo.com | greivesherefords.com

2017 NATIONAL WESTERN

STCC SHR

SNIPER

525 ET



SIRE: CRR 719 CATAPULT 109
DAM: SHOWTIME RAMSEY LOLA 122
REGISTRATION #43622183

OWNED WITH: STOREY HEREFORD RANCH
SEMEN: \$30 CERTIFICATE: \$50

H EXCEL

8051 ET



SIRE: GO EXCEL L18
DAM: H LADY GOLD 323
REGISTRATION #42910021

OWNED WITH: PUGH CENTRAL STATION
SEMEN: \$40 CERTIFICATE: \$50

SHOWTIME FLASH

509 ET



SIRE: JLB W26 LEGACY 1101
DAM: KOCH'S ALEXIS 3702
REGISTRATION #43622184

OWNED WITH: 48 CATTLE CO
& POHLMANN CATTLE CO.
SEMEN: \$30 CERTIFICATE: \$50

JLB SHOWTIME PUGH DYNASTY

JLB SHOWTIME PUGH



SIRE: JLB W26 LEGACY 1101
DAM: JLB LADY HEADLINE 0563
REGISTRATION #43405009

OWNED WITH: PUGH CENTRAL STATION
SEMEN: \$30 CERTIFICATE: \$50

SHOWTIME EXCEED

230 ET



SIRE: H EXCEL 8051 ET
DAM: KOCH'S ALEXIS 3702
REGISTRATION #43291009

SEMEN: \$30 CERTIFICATE: \$50



JEFF KOCH & JILL BLAKE
MOORELAND, IN
317-446-8589

WWW.SHOWTIMECATTLE.COM

Elite Hereford Genetics!

